

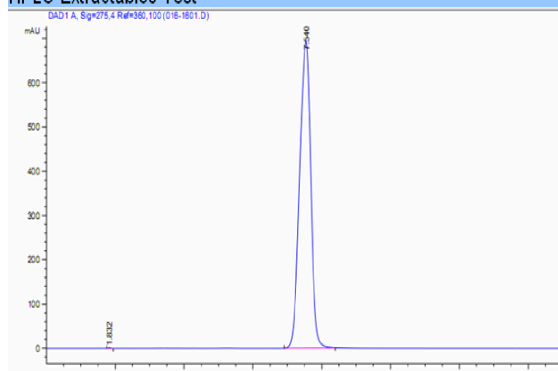
## FilterBio® GF Pre-filter Syringe Filter

FilterBio® GF Pre-filter Syringe Filters are syringe-operated filters with 1.2µm pore size glass fiber prefilter. For the housing and membrane, it's welded together. Compared with the common syringe filter, it has better flow rate and better filtration efficiency. The Classic range is available in all of the major membranes including Nylon, PTFE, PVDF, and PES, which are supplied in 13mm, 25mm, 30mm formats in polypropylene housings.

Bergenin(in Methanol)



### HPLC Extractables Test



Agilent 1200, Column: C18 UV = 254 nm,  
Mob.phase:MeOH/H<sub>2</sub>O:20:80, Temperature:  
25°C, Flow rate:0.8ml/min, sample:2mg/ml

### Features:

**Experience:** Colour same as nonsterile syringe filter

**Better Filtration Efficiency:** Glass fiber pre-filter

**Application Compatibility:** Broad range of filtration media meets diverse application needs and best for chromatography application

**Sterile:** Filters can be purchased pre-sterilized by Gamma radiation and individually packaged

### Validated HPLC Performance

HPLC certification which guarantees the filters will not produce extraneous peaks in the UV range.

100% integrity tested with higher burst strength ratings assuring they will perform consistently.

Available in 13 and 25mm sizes and available in sterile, too.

0.45µm for most clarification applications and 0.22µm when fine particulate removal is required. Other pore size are available in 0.8µm to 5µm.

## Technical specifications

Parameters	13mm	25mm	30mm
Effective Filtration Area(cm <sup>2</sup> )	1	3	4.5
Maximum Pressure	87psi (6.0 bar) at 20 °C	87psi (6.0 bar) at 20 °C	87psi (6.0 bar) at 20 °C
Maximum Operating Temperature	50 °C	50 °C	50 °C
Materials of Construction	Housing: Polypropylene	Housing: Polypropylene	Housing: Polypropylene
Filtration Media	As specified		

Holdup volume (μl)	<25	<100	<200
Sample volume (ml)	<10	<100	<200
Connectors	Inlet: Female Luer Lock Outlet: Male Slip Luer	Inlet: Female Luer Lock Outlet: Male Slip Luer	Inlet: Female Luer Lock Outlet: Male Slip Luer
Flow Direction	Inlet: Female Luer Lock Outlet: Male Slip Luer (MSL)	Inlet: Female Luer Lock Outlet: Male Slip Luer	Inlet: Female Luer Lock Outlet: Male Slip Luer

## QC control

After manufacturing it in shape, we still focus on testing it to judge whether it is OK and using strictly quality controlled system to forbidden shoddy product.

Every 90 in 100 can be sold to our customer in the end, 10 piece is to be died out.

The shelf life of packaged product is also monitored and controlled within our warehouses to ensure efficient stock rotation.

Each piece through this system are selected after concerning 5 **factors** with critical specifications set for:

- \* Bubble point
- \* Burst pressure
- \* Membrane adsorption (protein)
- \* Flow rate
- \* UV extractables (by HPLC)

## Product Information

Item	Description
<b>Nylon+GF 100/pk</b>	
FBS13NY022G	0.22μm, 13mm
FBS13NY045G	0.45μm, 13mm
FBS25NY022G	0.22μm, 25mm
FBS25NY045G	0.45μm, 25mm
FBS30NY022G	0.22μm, 30mm
FBS30NY045G	0.45μm, 30mm
<b>PTFE(Hydrophobic)+GF 100/pk</b>	
FBS13PTFE022HG	0.22μm, 13mm
FBS13PTFE045HG	0.45μm, 13mm
FBS25PTFE022HG	0.22μm, 25mm
FBS25PTFE045HG	0.45μm, 25mm
FBS30PTFE022HG	0.22μm, 30mm
FBS30PTFE045HG	0.45μm, 30mm
<b>PTFE(Hydrophilic)+GF 100/pk</b>	
FBS13PTFE022LG	0.22μm, 13mm
FBS13PTFE045LG	0.45μm, 13mm
FBS25PTFE022LG	0.22μm, 25mm

FBS25PTFE045LG	0.45μm, 25mm
FBS30PTFE022LG	0.22μm, 30mm
FBS30PTFE045LG	0.45μm, 30mm
<b>PES+GF 100/pk</b>	
FBS13PES022G	0.22μm, 13mm
FBS13PES045G	0.45μm, 13mm
FBS25PES022G	0.22μm, 25mm
FBS25PES045G	0.45μm, 25mm
FBS30PES022G	0.22μm, 30mm
FBS30PES045G	0.45μm, 30mm
<b>PVDF(Hydrophobic)+GF 100/pk</b>	
FBS13PVDF022HG	0.22μm, 13mm
FBS13PVDF045HG	0.45μm, 13mm
FBS25PVDF022HG	0.22μm, 25mm
FBS25PVDF045HG	0.45μm, 25mm
FBS30PVDF022HG	0.22μm, 30mm
FBS30PVDF045HG	0.45μm, 30mm
<b>PVDF(Hydrophilic)+GF 100/pk</b>	
FBS13PVDF022LG	0.22μm, 13mm
FBS13PVDF045LG	0.45μm, 13mm
FBS25PVDF022LG	0.22μm, 25mm
FBS25PVDF045LG	0.45μm, 25mm
FBS30PVDF022LG	0.22μm, 30mm
FBS30PVDF045LG	0.45μm, 30mm
<b>CA+GF 100/pk</b>	
FBS13CA022G	0.22μm, 13mm
FBS13CA045G	0.45μm, 13mm
FBS25CA022G	0.22μm, 25mm
FBS25CA045G	0.45μm, 25mm
FBS30CA022G	0.22μm, 30mm
FBS30CA045G	0.45μm, 30mm
<b>MCE+GF 100/pk</b>	
FBS13MCE022G	0.22μm, 13mm
FBS13MCE045G	0.45μm, 13mm
FBS25MCE022G	0.22μm, 25mm
FBS25MCE045G	0.45μm, 25mm
FBS30MCE022G	0.22μm, 30mm
FBS30MCE045G	0.45μm, 30mm
<b>RC+GF 100/pk</b>	
FBS13RC022G	0.22μm, 13mm
FBS13RC045G	0.45μm, 13mm
FBS25RC022G	0.22μm, 25mm
FBS25RC045G	0.45μm, 25mm
FBS30RC022G	0.22μm, 30mm

FBS30RC045G	0.45μm, 30mm
-------------	--------------